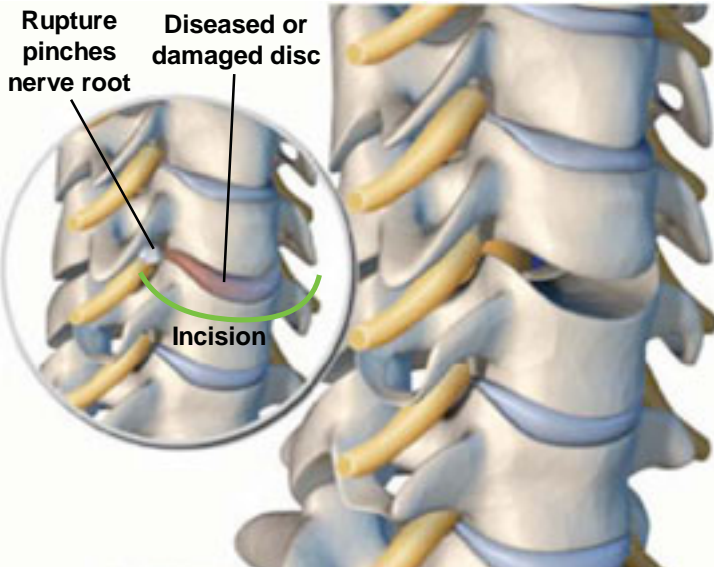


## Artificial Cervical Disc Replacement (PCM)



### Overview

(Caution: Investigational Device)

A goal of this procedure is to relieve the pain caused by pinched nerves due to a damaged disc in the cervical spine. The diseased or damaged disc will be replaced with a specialized implant.

### Removing the Disc

The surgeon creates a small incision in the front of the neck to gain access to the spine. The diseased disc is removed from between the vertebral bodies.

### Preparing the Vertebrae

The surfaces of the vertebral bodies are cleared of all damaged disc tissue and shaped to accept the implant.

### Implanting the Disc

The PCM® artificial disc is inserted into the space between the vertebrae and carefully tapped into place. The endplates are designed to bond tightly to the vertebral bodies, stabilizing the spine.

### Alternative Treatment: Spinal Fusion

The spinal fusion procedure uses a metal plate to connect the vertebrae above and below the removed disc.

### PCM® Artificial Disc

The PCM® implant is designed to preserve motion.

