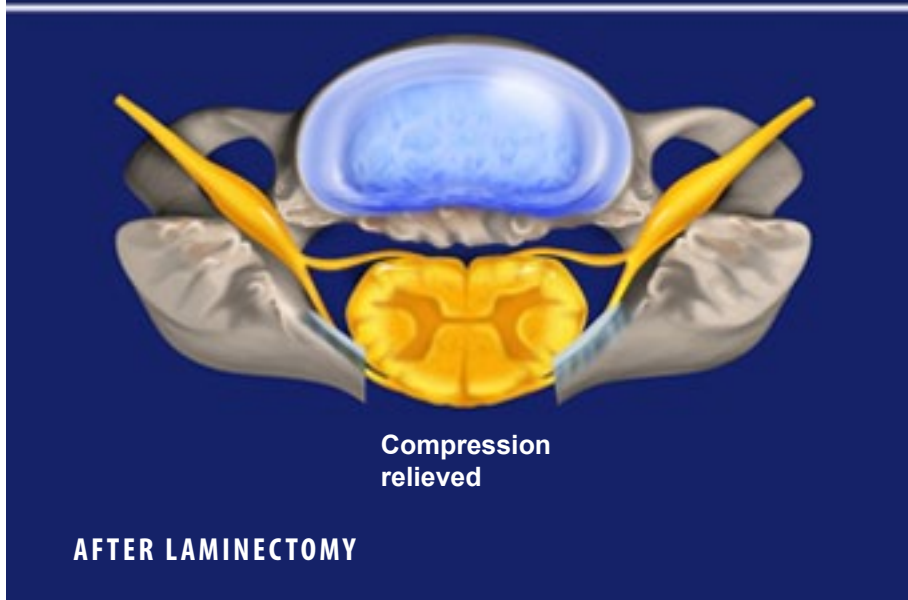
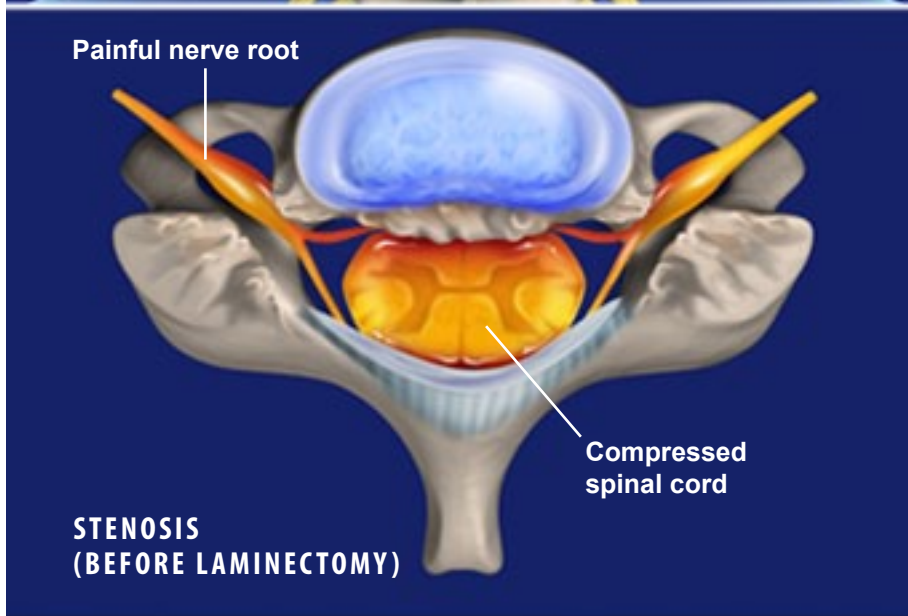


Laminectomy (Cervical)



Overview

This procedure removes a section of bone from the rear of one or more vertebrae to relieve the painful and disabling pressure of stenosis.

Preparation

Anesthesia is administered, and the patient is positioned to give the surgeon access to the back of the neck. The surgeon creates a small incision to expose the vertebrae.

Cutting the Bone

The surgeon uses a high-speed burr to cut a rectangular trough of bone from the vertebrae.

Removing the Lamina

The surgeon carefully removes the bone from the rear of the vertebrae, opening up the spinal canal and relieving pressure from the spinal cord and nerve roots.

Clearing Bone Spurs

The surgeon inspects the spinal canal and foramina - the openings through which the nerve roots exit the spinal canal. Any bone spurs behind the spinal cord and nerve roots are cleared away.

End of Procedure

After the spinal cord is adequately decompressed, the incision is closed. Drains may be inserted in the wound to prevent fluid buildup. The patient may require a cervical collar for a brief period after the procedure.